

SENSING THE ENVIRONMENT...

THE TATE LIVERPOOL PHOTOGRAPHIC GRID PROJECT 2019

JOIN IN!

Do you have a camera?

We're making a photographic mosaic of Tate Liverpool and we want you to participate.

We've drawn a grid over the building and we want contributions - photos - which are taken from the grid points.

Come back here when you've taken them and we will:

- Print them and display them here
- Project them onto the wall of the gallery
- Include them on the Grid Project website at www.thegridproject.org.uk

What to do

1. Select up to 3 locations from the plans and tell us which you've chosen
2. Find the location(s).
3. Standing at the location, take one or more photographs

Aim: take a photo which is a personal response to where you are standing. What is this place like? What attracts my attention? Is there something that sums it up?

4. Return to Tate Exchange Liverpool to submit your photos

Only one photo per grid location. JPEGs only. We'll make them square. If you can make them square yourself that's great.

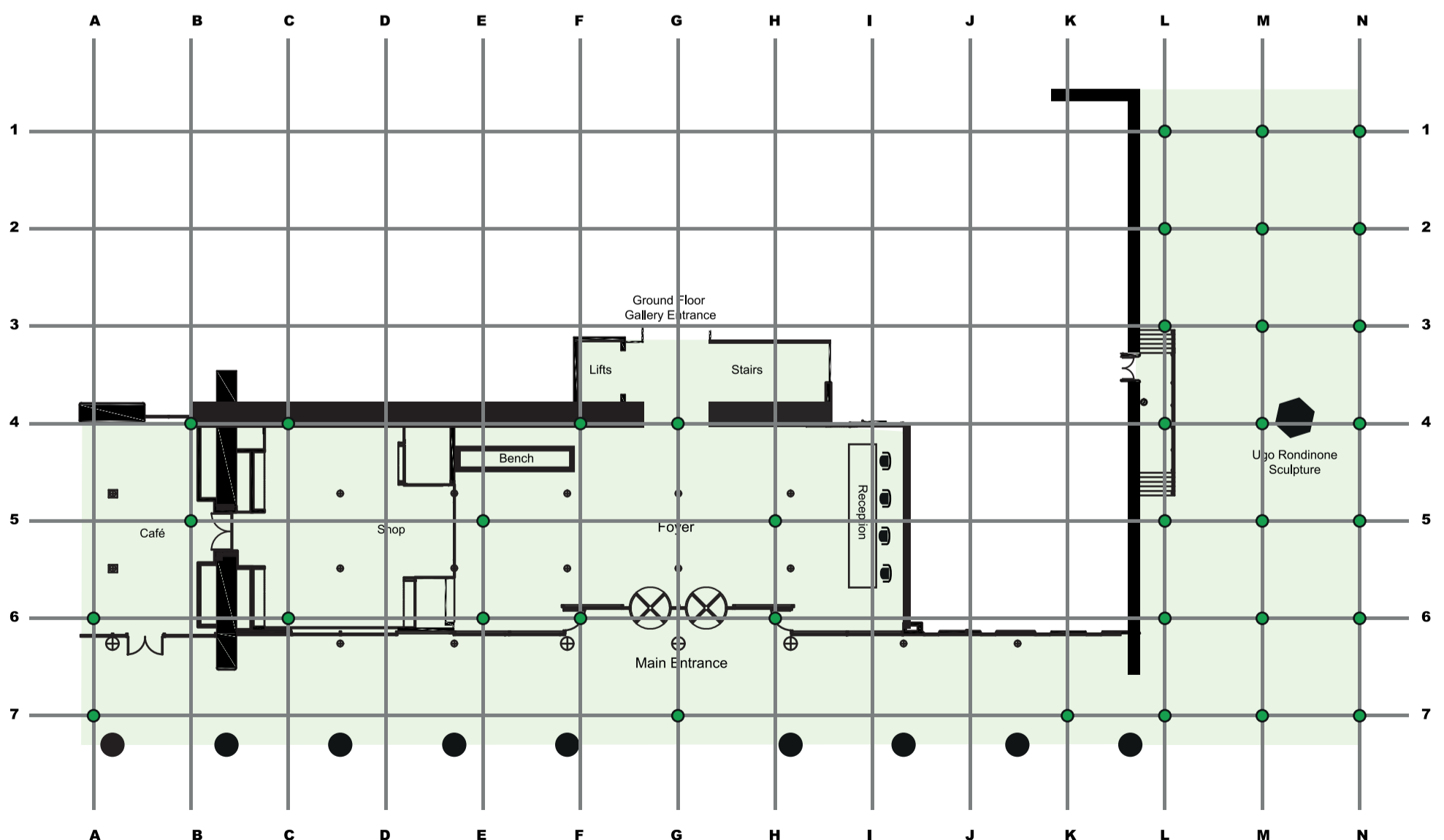
We will help with your submission. We can read memory cards, or you can email them to us at texgrid2019@gmail.com. Or we can receive them using social media. We'll need to know who you are & the grid reference eg *Dave Allen 4A*.

Some rules

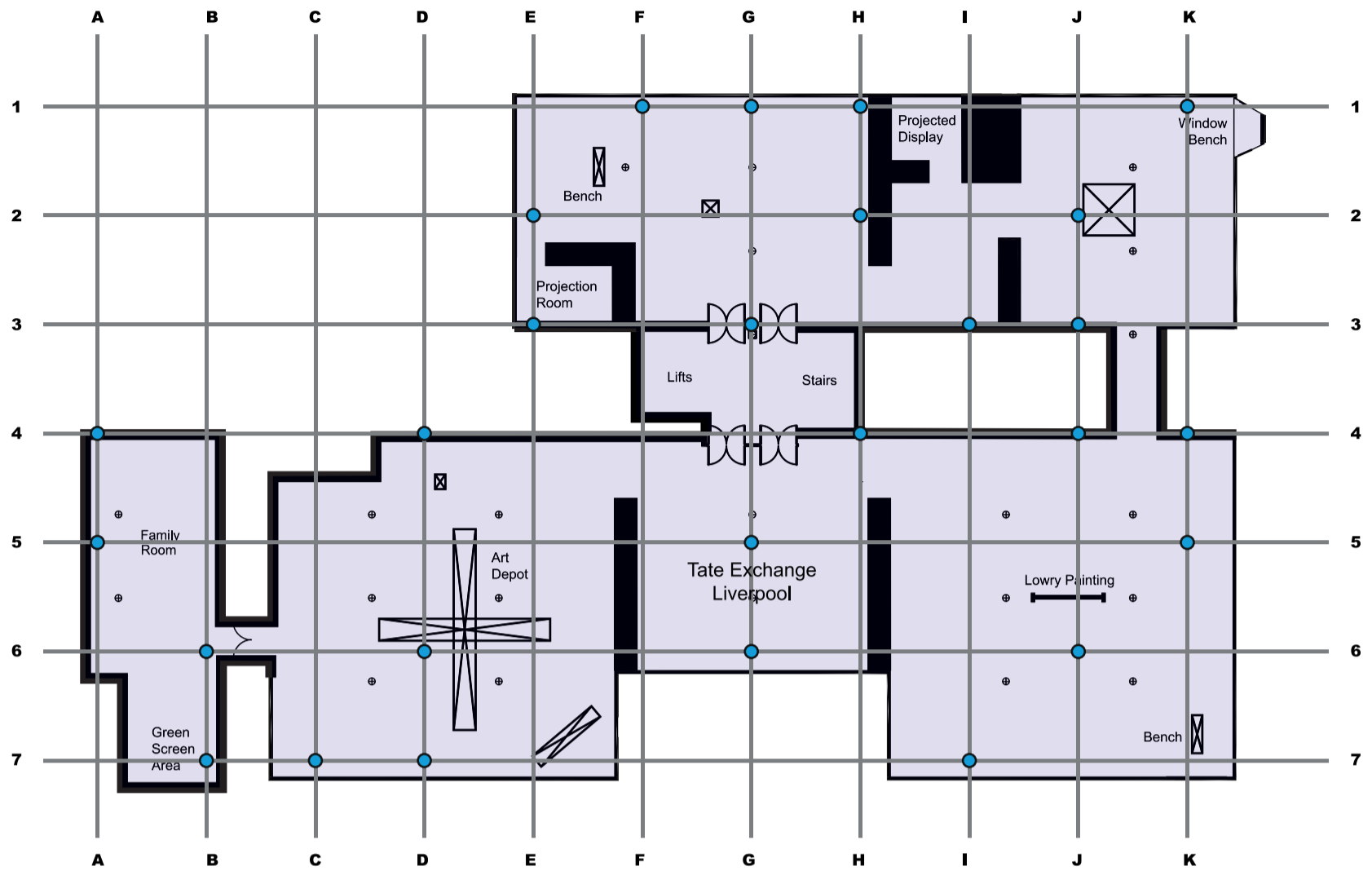
1. Never touch any works of art.
2. Don't cross any barriers or cordoned-off areas. If you can't stand on your location because of this, simply get as close as you can.
3. Don't use a member of the public as the main subject of your photo.

Small print. By taking part in this project you are agreeing to your picture being printed and displayed in Tate Exchange Liverpool, included a projected display, shown on the Grid Project website and printed in any follow-up materials. Copyright remains with the photographer.

TATE LIVERPOOL : GROUND FLOOR PHOTO LOCATIONS

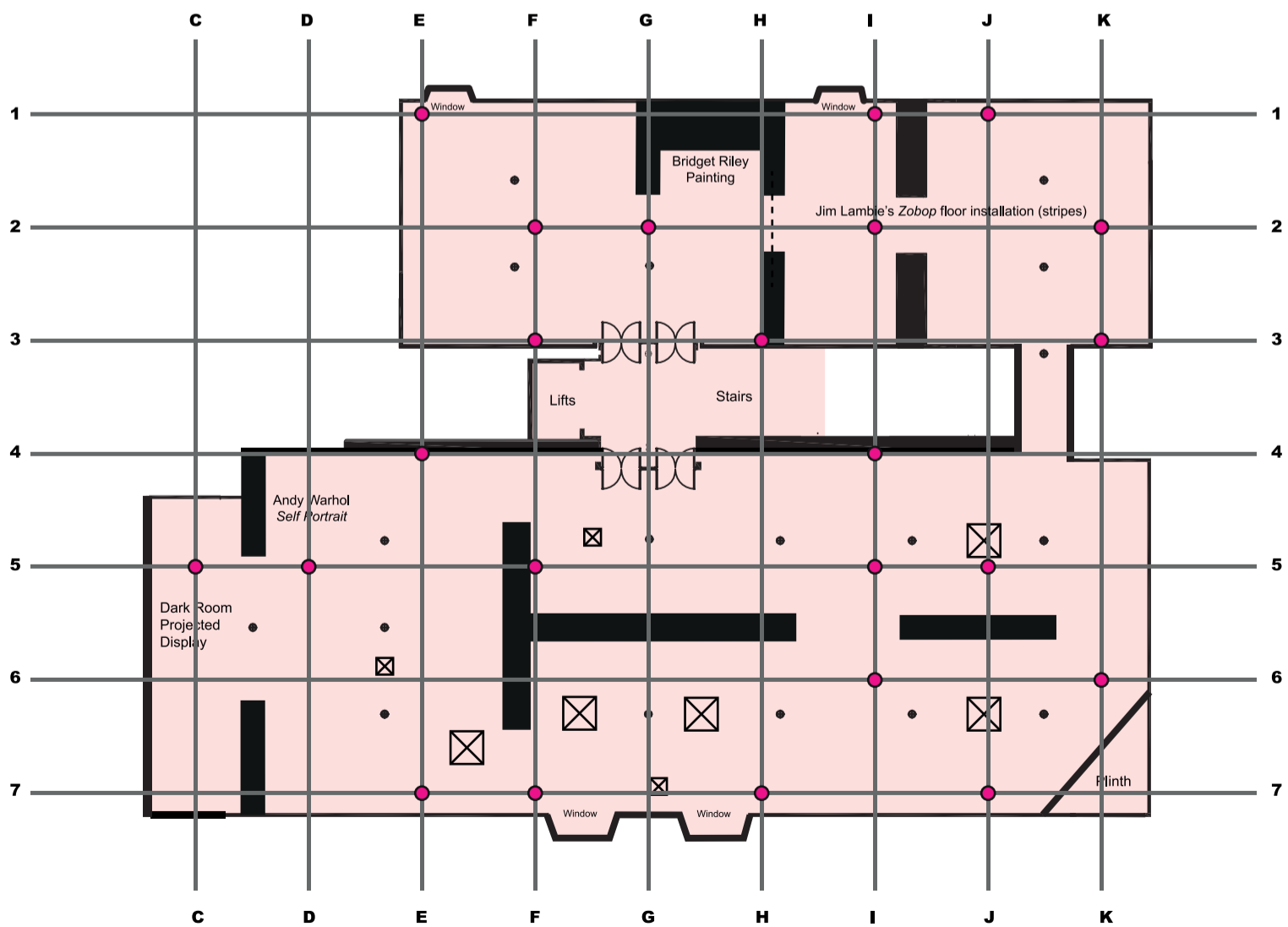


● Locations for photographs (grid points) on the ground floor. Note that some of these are outdoors. The distance between points is approximately 5 metres.



● Locations for photographs (grid points) on the first floor. The grid is spaced at approximately 5 metre intervals. ☒ Exhibits/plinths/cases

TATE LIVERPOOL : SECOND FLOOR PHOTO LOCATIONS



● Locations for photographs (grid points) on the second floor. The grid is spaced at approximately 5 metre intervals. ☒ Exhibits/plinths/cases